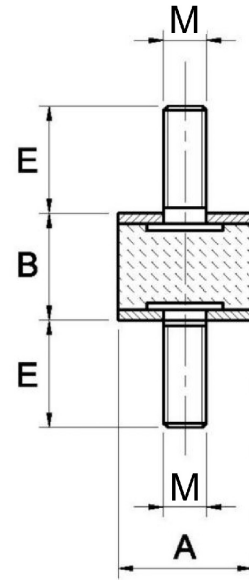


MM

Antivibrante Cilindrico in Acciaio Zincato Maschio / Maschio

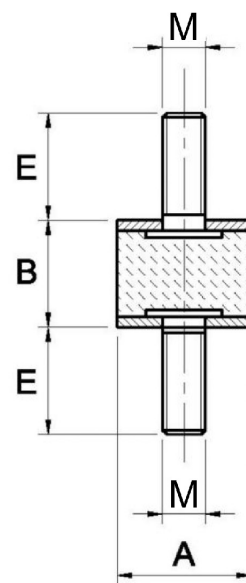
Zinc Plated Double Male Cylindrical Mounting

Cod.	A	B	M	E	Carico max a Compressione Max Compression Load daN	Carico max a Taglio Max Shear Load daN
A1MM0607	6	7	03MA	6	2	1
A1MM1010	10	10	04MA	10	4	1
A1MM1010-12	10	10	04MA	12	4	1
A1MM1015	10	15	04MA	10	5	1
A1MM1015-12	10	15	04MA	12	5	1
A1MM1310	13	10	05MA	10	15	2
A1MM1510	15	10	04MA	10	15	2
A1MM1515	15	15	04MA	14	15	2
A1MM1515L	15	15	04MA	19	15	2
A1MM1520	15	20	04MA	10	17	2
A1MM1530	15	30	04MA	12	18	2
A1MM1610	16	10	05MA	12	20	2
A1MM1620	16	20	05MA	12	15	2
A1MM2008	20	8	06MA	16	30	3
A1MM2010	20	10	06MA	16	36	3
A1MM2015	20	15	06MA	16	34	4
A1MM2015-18	20	15	06MA	18	34	4
A1MM2020	20	20	06MA	16	34	2
A1MM2020-18	20	20	06MA	18	34	2
A1MM2025	20	25	06MA	16	24	3
A1MM2030	20	30	06MA	16	24	5
A1MM2030-18	20	30	06MA	18	24	5
A1MM2510	25	10	06MA	20	35	5
A1MM2515	25	15	06MA	18	35	5
A1MM2520/6	25	20	06MA	18	45	5
A1MM2525	25	25	06MA	18	40	5
A1MM2530/6	25	30	06MA	18	34	3
A1MM2520/8	25	20	08MA	20	45	5
A1MM2530/8	25	30	08MA	20	34	3
A1MM3010/6	30	10	06MA	18	40	4
A1MM3030/6	30	30	06MA	18	60	7
A1MM3015	30	15	08MA	23	42	9
A1MM3020-15	30	20	08MA	15	66	9
A1MM3020	30	20	08MA	23	66	9
A1MM3025	30	25	08MA	20	66	9
A1MM3030	30	30	08MA	23	61	7
A1MM3040	30	40	08MA	23	55	5
A1MM4020	40	20	08MA	23	63	12
A1MM4025	40	25	08MA	23	50	10
A1MM4030/8	40	30	08MA	23	98	15
A1MM4035	40	35	08MA	23	88	13
A1MM4040/8	40	40	08MA	23	100	13
A1MM4045	40	45	08MA	23	100	13
A1MM4050	40	50	08MA	23	110	13
A1MM4030/10	40	30	10MA	28	98	15
A1MM4040/10	40	40	10MA	28	107	13
A1MM5040/8	50	40	08MA	25	143	17
A1MM5020	50	20	10MA	28	168	21
A1MM5025	50	25	10MA	28	170	22



Continua da MM.

Cod.	A	B	M	E	Carico max a Compressione Max Compression Load daN	Carico max a Taglio Max Shear Load daN
A1MM5030	50	30	10MA	28	158	19
A1MM5040	50	40	10MA	28	143	17
A1MM5045	50	45	10MA	28	136	16
A1MM5050	50	50	10MA	28	133	13
A1MM5060	50	60	10MA	28	140	13
A1MM6025/10	60	25	10MA	28	150	15
A1MM6030/10	60	30	10MA	28	172	36
A1MM6035/10	60	35	10MA	28	200	20
A1MM6050/10	60	50	10MA	35	199	24
A1MM6060	60	60	10MA	28	205	24
A1MM6030/12	60	30	12MA	37	172	36
A1MM6040/12	60	40	12MA	37	169	28
A1MM6050/12	60	50	12MA	37	199	24
A1MM6535	65	35	12MA	37	300	46
A1MM6550	65	50	12MA	37	230	23
A1MM7040/10	70	40	10MA	28	230	40
A1MM7050/10	70	50	10MA	28	210	55
A1MM7050/12	70	50	12MA	37	230	55
A1MM7550/10	75	50	10MA	28	300	55
A1MM7525	75	25	12MA	37	382	89
A1MM7540	75	40	12MA	37	377	79
A1MM7550	75	50	12MA	37	372	69
A1MM8040	80	40	12MA	37	385	79
A1MM10030	100	30	16MA	42	700	110
A1MM10040	100	40	16MA	42	685	99
A1MM10050	100	50	16MA	42	560	99
A1MM10055	100	55	16MA	42	635	79
A1MM10060	100	60	16MA	42	587	49



Caratteristiche

Materiale corpo: Miscela Gomma NR/SBR

Durezza standard: 60 Shore A

Tolleranza sulla durezza: +/- 5 SH

A richiesta: Differenti lunghezze della vite

Parte metallica e/o fissaggio:

Vite e rondella zincate

Tipo inserto standard:

Vite pressata sulla rondella

Product specification

Main part material:

NR/SBR rubber compound

Standard hardness: 60 Shore A

Hardness tolerance: +/- 5 SH

On request: Different screw lengths

Metallic part: Zinc plated screw and washer

Standard thread:

Screw pressed on the washer

–
Misure e durezza differenti producibili su richiesta, rivolgersi all'ufficio commerciale. La quota "E" può essere soggetta a variazioni senza preavviso.

–
Other sizes or hardnesses can be produced on demand. For information please contact our sales department. Dimension "E" can vary without notice.